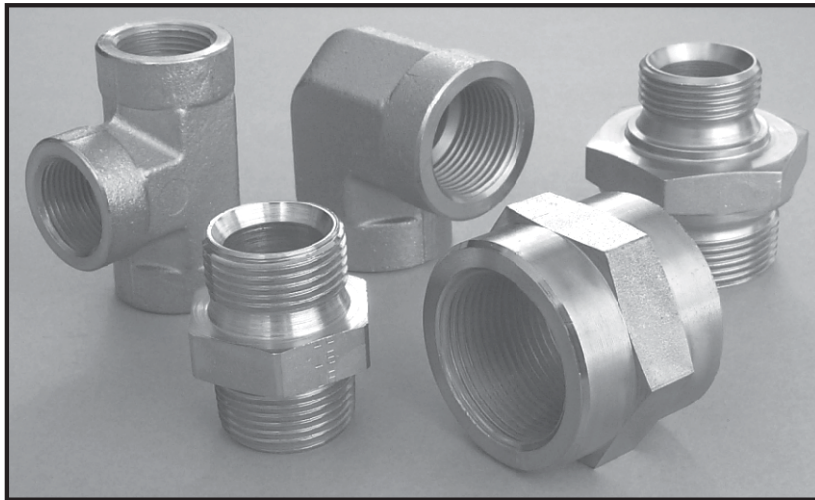


ADAPTORS



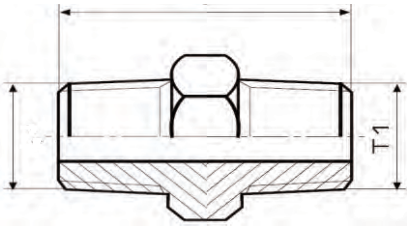
The imported adaptors are augmented by a reliable locally produced range. Available in BSP, BSP Taper and NPT screwed threads, these adaptors and reducers are suitable as companions for hydraulic hoses and steel tube fittings.

The latest additions to the range are the BSP Female Elbows, Sockets and Tee Pieces giving you now an even wider product range to choose from

Please call 011 458 1200 or email sales@alba.co.za for a quote

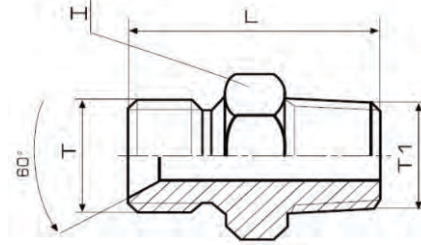
ADAPTORS

NPT Male Straight Adaptor



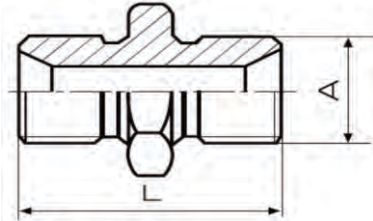
F10-1/8
 F10-1/4
 F10-1/4-1/8
 F10-3/8
 F10-3/8-1/8
 F10-3/8-1/4
 F10-1/2
 F10-1/2-1/4
 F10-1/2-3/8
 F10-3/4
 F10-3/4-3/8
 F10-3/4-1/2
 F10-1"
 F10-1"-1/2
 F10-1"-3/4
 F10-1 1/4
 F10-1 1/4-1"
 F10-1 1/2
 F10-1 1/2-1"
 F10-1 1/2-1 1/4
 F10-2"

BSP/BSPT - Male Straight Adaptor



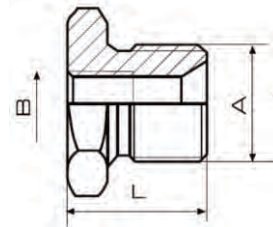
F11-1/4
 F11-1/4-1/8
 F11-3/8
 F11-3/8-1/4
 F11-3/8-1/2
 F11-1/2
 F11-1/2-3/8
 F11-1/2-3/4
 F11-5/8
 F11-5/8-1/2
 F11-3/4
 F11-3/4-1/2
 F11-3/4-1"
 F11-1"
 F11-1"-3/4
 F11-1"-1 1/4
 F11-1 1/4
 F11-1 1/4-1"
 F11-1 1/2
 F11-1 1/2-1 1/4
 F11-2"

BSP - Male Straight Adaptor



F13-1/8
 F13-1/4
 F13-1/4-1/8
 F13-3/8
 F13-3/8-1/4
 F13-1/2
 F13-1/2-1/4
 F13-1/2-3/8
 F13-3/4
 F13-3/4-3/8
 F13-3/4-1/2
 F13-1"
 F13-1"-3/4
 F13-1"-1/2
 F13-1 1/4
 F13-1 1/4-1"
 F13-1 1/2
 F13-1 1/2-1"
 F13-1 1/2-1 1/4
 F13-2"
 F13-2"-1
 F13-2"-1 1/4
 F13-2"-1 1/2

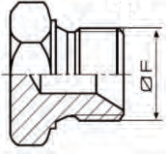
NPT - Reducing Bush



F15-1/4-1/8
 F15-3/8-1/8
 F15-3/8-1/4
 F15-1/2-1/8
 F15-1/2-1/4
 F15-1/2-3/8
 F15-3/4-1/4
 F15-3/4-3/8
 F15-3/4-1/2
 F15-1"-1/4
 F15-1"-3/8
 F15-1"-1/2
 F15-1"-3/4
 F15-1 1/4-1/2
 F15-1 1/4-3/4
 F15-1 1/4-1"
 F15-1 1/2-3/4
 F15-1 1/2-1"
 F15-1 1/2-1 1/4
 F15-2"-3/4
 F15-2"-1"
 F15-2"-1 1/4
 F15-2"-1 1/2

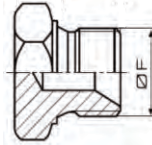
ADAPTORS

NPT - Hexagon Head Plug



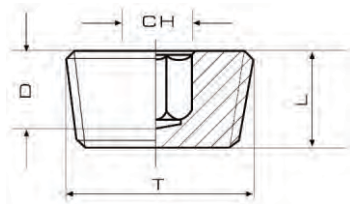
- F16-1/8
- F16-1/4
- F16-3/8
- F16-1/2
- F16-3/4
- F16-1"
- F16-1 1/4
- F16-1 1/2
- F16-2"

BSP - Hexagon Head Plug



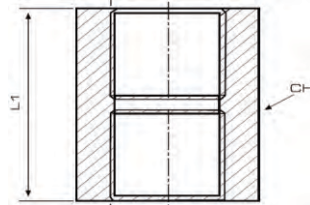
- F17-1/8
- F17-1/4
- F17-3/8
- F17-1/2
- F17-5/8
- F17-3/4
- F17-1"
- F17-1 1/4
- F17-1 1/2
- F17-2"

BSPT - Plugs



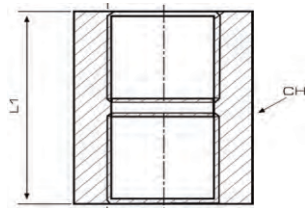
- F18-1/8
- F18-1/4
- F18-3/8
- F18-1/2
- F18-3/4
- F18-1"
- F18-1 1/4
- F18-1 1/2

BSP - Female Straight Socket BSI 5200



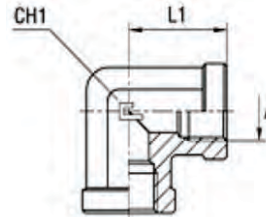
- F20-1/8
- F20-1/4
- F20-3/8
- F20-1/2
- F20-3/4
- F20-1"
- F20-1 1/4
- F20-1 1/2
- F20-2"

NPT - Female Straight Socket BSI 5200



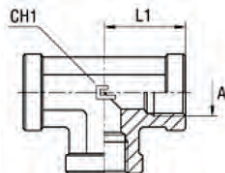
- F21-1/8
- F21-1/4
- F21-3/8
- F21-1/2
- F21-3/4
- F21-1"
- F21-1 1/4
- F21-1 1/2
- F21-2"

BSP - Female Elbow Union



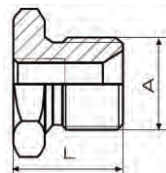
- F23-1/4
- F23-3/8
- F23-1/2
- F23-3/4
- F23-1"

BSP - Female Tee Union



- F24-1/4
- F24-3/8
- F24-1/2
- F24-3/4
- F24-1"

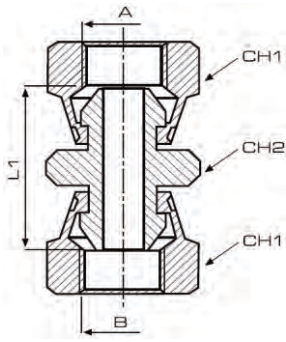
RI - Reducing Bushes



- RI-2-1
- RI-2-1 1/4
- RI-2-1 1/2

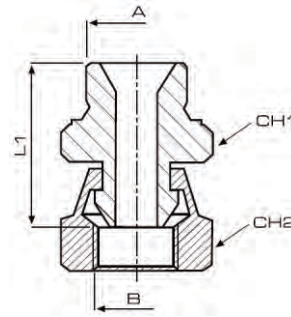
ADAPTORS

BSP - Female Swivel



F30-1/4
F30-3/8
F30-1/2
F30-3/4
F30-1"
F30-1 1/4
F30-1 1/2

BSP - Male /Female Swivel



F31-1/4
F31-3/8
F31-1/2
F31-3/4
F31-1"
F31-1 1/4
F31-1 1/2

BONDED WASHERS

BSP

Type	Outside \varnothing	Inside \varnothing	Thickness	Minimum Burst Pressure Bar
BW-1/8BSP	15.88	10.37	2.03	1480
BW-1/4BSP	20.57	13.74	2.03	1540
BW-3/8BSP	23.80	17.28	2.03	1230
BW-1/2BSP	28.58	21.54	2.34	1120
BW-5/8BSP	31.75	23.49	2.34	1240
BW-3/4BSP	34.93	27.05	2.34	1050
BW-1"BSP	42.80	33.89	3.25	780
BW-1 1/4BSP	52.38	42.93	3.25	690
BW-1 1/2BSP	58.60	48.44	3.25	690
BW-2"BSP	73.03	60.58	3.25	720
BW-2 1/2"BSP	90.17	76.08	3.25	680

Metric

Type	Outside \varnothing	Inside \varnothing	Thickness	Minimum Burst Pressure Bar
BW-06M	11	6.7	1.0	1480
BW-08M	14	8.7	1.0	1510
BW-10M	16	10.7	1.0	1300
BW-12M	18	12.7	1.5	1150
BW-14M	22	14.7	1.5	1510
BW-16M	24	16.7	1.5	1370
BW-18M	26	18.7	1.5	1260
BW-20M	28	20.7	1.5	1140
BW-22M	30	22.7	2.0	1080
BW-24M	32	24.7	2.0	1000
BW-26M	35	26.7	2.0	1090
BW-30M	39	31	2.0	870